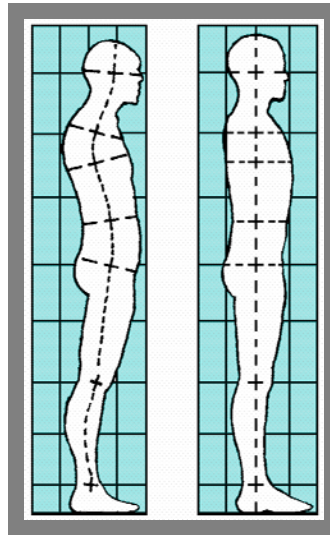


APPLIED STRUCTURAL
INTEGRATION PROFESSIONAL
PRACTITIONER TRAINING
GOLD COAST, AUSTRALIA
NOV 2011



Produced by the Quantum Health Trust & Australian School of
Applied Structural Integration & Somatic Studies
Email quantum@onthenet.com.au Ph +61 - 7 - 5527 0333
9 Nakina St, Southport 4215, Queensland, Australia

AUSTRALIAN PROFESSIONAL PRACTITIONER TRAINING Gold Coast, Queensland Australia

Table of Contents

Page:

3.	Training Dates
4. - 6.	Training Schedule
7.	Curriculum Description
8. - 9.	Required Book list
10. - 13.	Student Training Agreement
14. - 16	Student Cancellation & Refund Policy
17 - 18	ASI School Code of Ethics
19 - 21	Application to Train

THE AUSTRALIAN PRACTITIONER TRAINING

**Presented by the Faculty of the Australian School of Applied
Structural Integration & Somatic Studies**

Training Dates

Phase I (2 weeks residential intensive)

Proposed Dates:

11 Nov (Fri) to 26 Nov (Sat) 2011

Phase II (approx 6 months) Supervised Independent Study

Phase III (4 weeks residential intensive)

27 April (Fri) to 2nd June (Sat) 2012

Phase IV (approx 6 months) Clinical Practice

Phase V (2 weeks residential intensive) – Competency Assurance

16th Nov 2012 (Fri) 1st December (Sat) 2012

Graduation Dinner Saturday evening

A Professional Career Training With

**The Australian School of Applied Structural Integration
& Somatic Studies - Queensland**

Training Schedule

APPLIED STRUCTURAL INTEGRATION is a holistic process combining structural bodywork, movement education and dialogue in an exploration of how your body reflects your psyche. The goal is not only to produce physical changes but to educate and empower the individual to embody these changes and continue the process of growth and awareness for themselves.

THE TRAINING:

Phase I - Dynamics of Applied Structural Integration

The first phase is a two week intensive where students will be immersed in the experience of the work. Students begin their training in movement, anatomy, seeing structure in relation to balance and alignment, energy work, psychology, business and an introduction to the art of Applied Structural Integration.

Phase II - Supervised Independent Study

The second phase is a supervised 6 month independent study programme. Students will be assigned an academic adviser who will assist them over this phase to further knowledge of the body, its structure and potential. Students participate in distance study which includes anatomy, bodywork, physiology, structure and function of the body, psychology, movement and business studies. Hours of study are approximately 18 to 22 hours per week depending on how the student applies themselves.

Phase III - The Art of Applied Structural Integration

The third phase is a five week intensive that concentrates on knowledge of the bodywork and all related movement studies, communication skills and the psychological work of the Structural Integration series. Students take 2 practise clients and a fellow student through the entire Structural Integration Series with supervision and instruction. During this phase students integrate the components of Applied Structural Integration into a valuable professional skill base to begin work in private practice.

Phase IV - Building Your Practise

This phase is a six month "clinical practice" intern phase. Students will be required to complete 20 Structural Integration sessions per month (120 sessions over 6 months) and report back to their Academic adviser each month for supervision on progress with bodywork, movement, rapport with clients and business development.

Phase V - Competency Assurance & Graduation

This final phase is a two week intensive where students come back to study and refine and advance all the topics of Applied Structural Integration, and take a practise client through the entire Structural Integration series to gain final assessment of their competency to graduate. Graduation takes place at the end of this phase.

PLEASE NOTE: The International Association of Structural Integrators (IASI) Certification exam will be available for students to sit. Those who pass this exam will graduate from this training with International Certification from IASI.

APPLIED STRUCTURAL INTEGRATION **A PROFESSIONAL PRACTITIONER CAREER TRAINING**

Training Schedule

FINANCIAL CONSIDERATIONS: All amounts which are in Australian dollars.

Investment: \$18,000 Aud.

Includes full tuition both distance and at the non residential intensives.

All sessions with Academic Advisers in Phase II and IV.

Complete career training in all aspects of Applied Structural Integration (ASI) including Business & Marketing.

The School can assist students in finding accommodation if required.

APPLYING FOR THE ASI PRACTITIONER TRAINING:

Prerequisites:

- Must be a minimum of 21 years of age.
- Must have a High School Education or equivalent level.
- Must have completed the Structural Integration Series with a Currently Registered and Certified Structural Integration Practitioner from IASI Recognised Schools.
Please refer to website <http://www.theiasi.org/about.php> or enquire directly with our school.
- Must be able to speak, write and understand the English language to a level that enables the student to understand lectures and complete all assignments associated with the training to a satisfactory level.
- Must have a basic knowledge of Anatomy & Physiology (minimum 30 hour course).
- Must have completed an Introduction to Structural Integration workshop with the Australian School of Applied Structural Integration & Somatic Studies or other approved Structural Integration introductory workshop, or in the case of applicants outside Australia a letter of recommendation from the Structural Integration practitioner they did their Structural Integration Series with. After completing prerequisites and sending in their application, the prospective student will attend a selection review either in person at the School or by telephone conference, to determine their overall readiness to begin their Training.

PAYMENT SCHEDULE:

- An application fee sent in with the application, of \$150 in Australian dollars (non refundable).
- A deposit of \$2,000 due immediately after selection will register the applicant.
- Remainder of payments over the course of the training as per payment plan outlined in the Student Training Agreement. This payment option attracts an additional 8% loading. **NOTE:** Students can elect to pay the whole of the course fee up front at selection which will avoid the extra add on finance cost.
- Refund schedule applicable as per the Student Contract.

WHO IS THE TRAINING FOR ?

A professional career in Applied Structural Integration is for people who are dedicated to bringing love, empowerment, healing, partnership and success into their lives and into the lives of others. The main prerequisites are emotional, mental and spiritual maturity and a willingness and commitment to continue ones own path of learning.

For more information please phone or email:

Applied Structural Integration Practitioner Trainings
The Australian School of Applied Structural Integration & Somatic Studies

9 Nakina St, Southport, Gold Coast,
Queensland, 4215
Australia

Ph: +61 (07) 5527-0333 Mob: 0439-799421 Email quantum@onthenet.com.au

CIRRICULUM DESCRIPTION

Applied Structural Integration Practitioner Training

<u>COURSE</u>	<u>HRS</u>	<u>DESCRIPTION</u>
BODYWORK	500 Hrs	Principles of Applied Structural Integration I – III Techniques of Structural Bodywork I – III Bodywork Practicums with Models - Supervised. In the field Clinical Practice, with supporting clinical documentation presented as a 3500 word thesis (240 hrs physically unsupervised with monthly skype meetings with Academic Adviser).)
MOVEMENT	165 Hrs	Human Evolution and Gravity Introduction to Human Movement Body Awareness and Movement Labs Movement Practicums 1 to 10 Communicating Movement Lessons Ergonomics & Application to form
PSYCHOLOGY	227 Hrs	Introduction to Psychological Inquiry Movement & Psychological expression Bodywork & Psychology I - III Theory and Practice of Dialogue Intra/Interpersonal Communications
ANATOMY, ASSESSMENT & PATHOLOGY	162 Hrs	Introduction to Body Systems Visceral Anatomy & Palpation Structural & Functional Assessment I – III Range of Motion Length Testing Range of Motion Strength Testing Myofascial Anatomy Dysfunction & Pathology Applied Human Anatomy/Physiology I - III Gross Anatomy Lab (where available)
BUSINESS/ETHICS	156 Hrs	Introduction to Marketing Practice Development I Practice Development II Business Standards, Ethics & Practice History of Structural Integration OH & S (safe practice & universal precautions)
TOTAL	<u>1200 Hrs</u>	

The practitioner training is on a pass/fail basis, with all students required to demonstrate a well-rounded understanding of the theory and principles of Structural Integration alongside all the supporting subject matter involved in a successful professional practice of Applied Structural Integration.

THE TRAINING REQUIRED BOOK LIST

Please NOTE non required books are marked (highly recommended)

ANATOMY

- Anatomy Colouring Book
Wynn and Kapit ISBN: 0-06455016-8
- Muscles Testing & Function
Kendal, Kendall & Provance, Williams & Wilkins ISBN: 0-683-04576-80
- Myofascial Pain & Dysfunction, **(highly recommended)**
The Trigger Point Manual Upper & Lower Extremities,
J.Travell & D. Simons ISBN: 0-683-08366-X
- Atlas of Human Anatomy
Frank Netter ISBN: 0-914168-18-5
- Colour Atlas/Text of Human Anatomy Vol 1,
Locomotor System By Werner Platzer ISBN: 0-86577-423-4 (TMP)
- Trail Guide To The Body
Andrew Biel ISBN 0-9658534-1-1
- Anatomy Trains
Thomas Myers 2nd Edn ISBN 0-443-06351-6
- The Endless Web **(highly recommended)**
R. Louis Shultz ISBN: 155643228-3

MOVEMENT

- Anatomy of Movement
Calais-Germain ISBN: 0-939616-17-3
- Anatomy of Movement: Exercises
Calais-Germain **(highly recommended)** ISBN: 0-939616-22-X

PSYCHOLOGY

- Embracing Ourselves, The Voice Dialogue Manual
Hal Stone Phd & Sidra Winkleman ISBN: 0-931432-45-6
- Hakomi: Body Centered Psychotherapy
Ron Kurtz ISBN: 0-06-500772-7
- Personality & Personal Growth
Fadiman & Frager, ISBN 0-06-506772-7

BODYWORK

Biomechanical Assessment Manual of the
Myofascial System

Cost \$15 Aud (from the School)

Bodywise
Joseph Heller
Can be purchased through
Josephs Website see www.hellerwork.com
Or at the start of Phase 1

ISBN: 0-914728-73-3

Cost \$38 Aud

Rolfing – The Integration of Human Structure
Ida P. Rolf

ISBN: 0-89281-335-0

BUSINESS

Business Mastery: A Business & Planning Guide
Cherie Sohnen-Moe, SMA Press, 2nd Edition

ISBN: 0-9621265-3-5

The Business Marketing Manual
Available from the School

\$25 Aud

(Highly Recommended)

7 Habits of Highly Effective People
Stephen R. Covey

ISBN: 0-671-70863-5

THE AUSTRALIAN APPLIED STRUCTURAL INTEGRATION PRACTITIONER TRAINING

STUDENT TRAINING AGREEMENT

Page 1 of 3

This document details the requirements that the Australian School of Applied Structural Integration has of students from phase 1 through to their graduation. In particular it lays out our requirements of students during their Phase 4 clinical practice phase and the Financial Payment Plan.

Student Obligations:

1. Complete all aspects of the Applied Structural Integration Training.
PLEASE NOTE All documentation by the student during Phase II and Phase IV will be electronic, therefore students are required to be computer literate and preferably own a laptop or to have access to an on line facility whereby all their homework and reports can be done digitally and emailed to their Academic Advisers and the Training Administrator.
 2. Pay the initial deposit of \$2,000 after successfully completing the selection interview.
 3. Select one of the following tuition payment options and agree to pay on or before due dates.
 - a) **Paying in full:** All amounts given are in Australian dollars
Pay by 1st Oct 2011 the sum of \$18,000 less the \$2,000 deposit paid after selection = Total \$16,000 For all payments please check with the Australian training administrator for bank account details.
- OR
- b) **Payment Plan**
(Please note this option attracts an administrative loading of 8% on \$18,000)

Pay an initial deposit of \$2,000 Aud. immediately after selection.

Pay the sum of \$5,560 Aud. 1st Oct 2011

Pay the sum of \$8,640 Aud. by 1st March 2012

Pay the sum of \$3,240 Aud. by 1st September 2012
4. Attend the Phase 1 Intensive on the Gold Coast of Queensland Australia in its entirety and complete all the course work within this phase to the satisfaction of the faculty.
 5. Complete all Assignments associated with Phase 2 Independent Study Phase by the due dates (to be advised during Phase 1) to the satisfaction of the faculty. Study hours per week are approx 18 to 22 hrs.
 6. Attend the Phase 3 Intensive on the Gold Coast of Queensland Australia in its entirety, completing all the course work within this phase to the satisfaction of the faculty.
 7. Complete all course work and reports associated with Phase 4 Clinical Practice including the 120 sessions of Applied Structural Integration on clients by the due dates given, to the satisfaction of the faculty. Supervision over this phase with an Academic Adviser is mandatory, and is available for up to 1 hour or parts thereof per

month. You the student will cover the cost of the phone calls or use skype which is free. **NOTE: Please read Phase 4 & 5 detailed addendum.**

8. Attend the Phase 5 Competency Assurance and Graduation Residential on the Gold Coast of Queensland Australia in its entirety, and complete all the course work within this phase to the satisfaction of the faculty.
9. Provide the required textbooks necessary to complete the Phase 2 Independent Study course work.
Please note books can be obtained second hand in many instances on Amazon Books.

PHASE 4 & 5 ADDENDUM

During Phase 4 the Student will meet with their Academic Adviser either in person by phone, or by skype, for one hour, once per month (6 in total) to review and discuss their progress. This is a mandatory supervision session and it is up to each student to initiate and book in the appointments ahead of time. Phone calls are at the student's expense so skype is recommended.

During Clinical Practice Phase 4 each student will send their Academic Adviser a monthly clinical report detailing their general progress on the forms provided. The Student will meet either in person, by phone or by skype for one hour, once per month for what is considered in this phase as professional supervision of their clinical practice, where aspects of the students session work both difficult and successful are discussed. The following details the clinical practice and documentation process required for phase 4.

Over this time students will perform a minimum of 120 Structural Integration sessions on clients, of which 66 will be associated with a full Applied Structural Integration Series. See below for details.

a) 120 Applied Structural Integration sessions (minimum of 90 minutes each session) of which 66 are taking 6 clients through a complete 11 session series. The rest can be random sessions ranging from one off to multiple sessions from the Structural Integration Series, although it is recommended to do as many series as possible within the 120 session requirement.

b) Photographs B1, A3, A7, A10. Please Note: even if you only do one session with a client, you must write up the intake form with notes from the session done, plus B1 photographs, as well as the client verification form. If you take a client through 3 sessions you will do B1 & A3 etc.

c) Copies or scans are to be made of your photographs, along with intake form and session notes, plus the 1 page report summarizing your experience of each completed series, and 1 or 2 paragraphs for random sessions, along with the session documentation/verification form. If you are doing multiple sessions with a client, one verification form will suffice.

d) All session documentation is to be digitally presented in CD form, and completed and sent to your adviser no less than 2 weeks before the start of Phase 5. Make sure to schedule your sessions so that all the documentation is completed on time. Please note, classes on how to document your sessions and process digital photographs are part of the training's curriculum.

To attain entry in to phase 5 students must complete 120 sessions of Applied Structural Integration. The student will be required to electronically compile their Phase 4 clinical practice notes. This will include the client photos taken, along with client intake forms, clinical notes for each session, and a 1 page report for each series completed. For sessions that were not a complete series write a brief 1 or 2 paragraph summation about the work that was done. A copy is to be sent to the training director, by the dates advised.

Phase 5 is a Competency Assurance and Graduation Residential Intensive. Each Student will perform the series on a model demonstrating their competency in all aspects of Applied Structural Integration.

The Australian School of Applied Structural Integration Obligations:

1. Complete instruction in Anatomy, Physiology, Principles of Movement, Psychology, and Business Studies as they relate to Applied Structural Integration and Structural Photography skills.
2. Complete training in the performance of Applied Structural Integration sessions, including bodywork, movement education and dialogue.
1. One hour of instruction and feedback with your Academic Adviser for each assignment from Independent Study course work during Phase II of the training, 11 in total. This is usually by skype or phone. The Student will coordinate with their Academic Adviser.
2. Supervision meetings for the student during the clinical practice phase 4, for a total of 1 hour each month, usually by skype or phone. These appointments are initiated by the student and are mandatory – Student covers the costs of the phone calls, however we highly recommend students register for Skype as this is a free service.
3. Accommodation is at the student's expense. The school can assist students to find suitable accommodation if required. Please discuss with the office if this is needed.

EXECUTED this _____ Day of _____ 20

At _____

Signed: _____

For The Australian School of Applied Structural Integration

Student Practitioner

Print Name: _____

Print name: _____

Witnessed: _____

Print Name: _____

4 of 4

The Australian School of Applied Structural Integration & Somatic Studies, of 9 Nakina St, Southport, Queensland, Australia is an approved school with the International Association of Structural Integrators.

Enquiries or complaints regarding this school and the training may be made in writing to the two entities below:

The Board of Directors
INTERNATIONAL HEADQUARTERS
Association of Structural Integrators
P.O. Box 8664
Missoula, MT, USA 59807
info@theIASI.org
+406-543-4856
+877-843-4274

The Board of Directors
Australian School of Applied Structural
Integration & Somatic Studies,
9 Nakina Street, Southport,
Queensland 4215, Australia.
quantum@onthenet.com.au

STUDENT CANCELLATION & REFUND POLICY

APPLIED STRUCTURAL INTEGRATION PRACTITIONER TRAINING

Page 1 of 3

The Australian School of Applied Structural Integration & Somatic Studies is hereinafter referred to as 'The School'

Refunds Before Entering Class

- 1 You will receive a full refund of tuition costs if you withdraw not later than midnight of the fifth day (excluding weekends and holidays) after signing the contract or making an initial payment provided you have not commenced the training.
2. After 5 business days (excluding weekends and holidays) an establishment fee equal to 10% of the total Phase 1 & II cost will be retained including any venue booking fees incurred by the school if you withdraw later than midnight of the fifth day (excluding weekends and holidays) after signing the contract or making an initial training payment provided you have not commenced the training.

Refunds After Entering Class

The following is a minimum refund policy for the Practitioner Training. All refunds must be paid within thirty days of the student's official date of termination.

If the Student commences these sections of the Training 'The School' will keep this % of Training Costs.

Section A

Phase 1 - 2 Week Residential Intensive in Australia \$5,000 - Payment Plan add on \$560
Including the Independent Study Phase 2 with
Academic Adviser

Section B

Phase 3 - 5 Week Residential Intensive in Australia \$8,000 - Payment Plan add on \$640

Section C

Phase 4 - Clinical Practice Phase with Supervisor \$3,000 - Payment Plan add on \$240
Including Phase 5 - 2 week Competency Assurance
& Graduation in Australia

Official Termination

The official date of Termination of a student shall be:

1. When The School receives written notice of the student's intention to discontinue the training.
2. When the Student is terminated for a violation of a published School Organizational policy that provides for termination.

3. When a student, without notice to the school fails to attend classes for 30 calendar days.
4. By termination by The School.
5. When a Student fails to maintain satisfactory progress, violates safety regulations, interferes with other students work, is disruptive, vulgar or obscene, under the influence of alcohol or drugs, does not make timely training payments or does not abide by the code of ethics of the Australian School of Applied Structural Integration & Somatic Studies, is subject to immediate termination (given in writing).

Cancellation of Classes

The School reserves the right to cancel a starting class if the number of students enrolling is deemed insufficient to begin the Training. Such cancellation will be considered a rejection by the school and the student is entitled to a full refund of all money less the student's application fee of \$150 that was paid at selection. This fee may be carried over for students wishing to reschedule their training to the next training with The School if this is taken up within 3 years.

Notice to Buyer

Do not sign this document/agreement before you read it or if it contains any blank spaces. This is a legal document. All pages of this agreement are binding. Read and initial all pages before signing.

You are entitled to a copy of this agreement and any other paper you may sign.

Cancellation

You may cancel this contract by submitting written notice of such cancellation to The School at its address on the contract, which notice shall be submitted not later than midnight of the fifth day (excluding weekends and holidays) following your signing this contract, or the written notice may be personally or otherwise delivered to The School within that time. In the event of dispute over timely notice, the burden to prove service rests on the sender.

Unfair Business Practice

It is an unfair business practice for the School to sell, discount or otherwise transfer this contract or promissory note without the signed written consent of the student or his/her financial sponsors and a written statement notifying all parties that the cancellation and refund policy continues to apply.

Effective Date of Acceptance

- I certify that:
- (1) I have read and understand the (cancellation and refund policy and the Complaints procedure and
 - (2) I have received a copy of the Training Schedule and associated documents.
 - (3) I am entitled to an exact copy of this enrollment agreement or any other papers I may sign pertaining to The School's Practitioner Training.

I hereby agree to abide by the conditions set forth herein. In addition, I agree to abide by the Schools Code of Ethics (see page 17 for Code of Ethics).

Executed This _____ Day in the Month of _____ Year _____

Signed Student: _____ Print Name: _____

Training Provider: _____ Print Name: _____
(For the Australian School of Applied Structural Integration & Somatic Studies)

Witnessed: _____ Print Name: _____

The Australian School of Applied Structural Integration & Somatic Studies (a Division of Quantum Health) 9 Nakina St, Southport, Gold Coast Queensland, Australia Ph: +61-55270333 Email quantum@onthenet.com.au

CODE OF ETHICS

Of the Australian School of Applied Structural Integration & Somatic Studies

Page 1 of 2

INTRODUCTION

The purpose of the Code of Ethics is to establish and maintain professional standards of conduct for Structural Integration Students, which will effectively inform and protect clients, colleagues and others.

Ethical standards comprise such values as integrity, competence, confidentiality and responsibility. The Student Practitioner shall bring mindfulness to their work and recognize and acknowledge that personal choices and actions can result in conflict and/or harm, however unintended. These choices or actions have consequences and/or repercussions. Therefore, the Student Practitioner, in assenting to this Code of Ethics, accepts their personal and professional responsibility to clients, colleagues, and society.

This Code of Ethics expresses ethical principles and provides guidelines for the practise of Applied Structural Integration. Although the code cannot resolve all ethical issues, it does provide a framework for addressing ethical and practise-related conflicts should they arise.

THE NATURE OF APPLIED STRUCTURAL INTEGRATION (ASI)

ASI is based on the assumption that every person is innately healthy. ASI educates and empowers individuals through bodywork, dialogue, and movement awareness. ASI is a system of somatic education, structural integration and bodywork which is based on the inseparability of body, mind and spirit.

MATTERS OF ETHICAL CONCERN

1. Responsibility to the client.
2. Responsibility to colleagues and the profession.
3. Responsibility to self.

1. RESPONSIBILITY TO THE CLIENT

- The Student Practitioner shall respect the client's right to privacy and preserve the confidentiality of such information obtained in the course of their training to the extent that they are in training and will be required to write up session notes and discuss certain aspects of their sessions with their supervisor. Confidential information shall be shared with others only with the informed consent of the client.
- The Student Practitioner shall always fill out a client intake form and keep accurate records of their sessions with clients. The client is to be provided with adequate information about the nature of Applied Structural Integration.
- The Student Practitioner shall recognise the dignity of the person and avoid discrimination on the basis of race, colour, gender, sexual orientation, social class, age, disability, religion or political beliefs.
- The Student Practitioner shall not impose their opinions, prejudices, or personal preferences of any kind on the client.
- The Student Practitioner shall maintain an appropriately private and clean clinic space, free from interruptions and distractions. This environment and setting shall be one where the client can safely experience both physical and emotional release.

1. RESPONSIBILITY TO THE CLIENT

- The Student Practitioner has the right to refuse services to the client if the process of Applied Structural Integration is contraindicated. This contraindication may be a medical, mental or emotional one, and includes, but is not limited to: the client being under the influence of any substance (legal, illicit, or prescribed or not) that may diminish or impair their judgement, their ability to accurately report physical experience (i.e. discomfort), or their ability to fully participate in the session.
- The Student Practitioner shall, under **no circumstance**, offer their services when a client is under the influence of alcohol, illicit drugs, or medication (prescribed or not), which may impair or diminish their judgement and/or ability to fully participate in a session.
- The Student Practitioner shall acknowledge the limits of their competence, and be respectful of their own health, well-being and self esteem, and refer the client to others when this proves necessary or desirable.
- The Student Practitioner is responsible for maintaining appropriate boundaries with the client. **No** interaction between practitioner and client which is soliciting of or engaging in sexual behaviour is **ever** a valid form of therapy or assistance and will result in the Student Practitioner being expelled from the training program.
- The Student Practitioner has a responsibility to relate to colleagues with integrity, respect, courtesy, fairness and good faith.
- The Student Practitioner shall refrain from making unfounded statements that may damage the reputation of their colleagues, or the reputation of other modalities, or their Practitioners.
- The Student Practitioner shall promote co-operation with colleagues to further professional interests and concerns.
- The Student Practitioner is expected to respect professional confidences about the clients of colleagues.
- The Student Practitioner shall not solicit the clients of other colleagues, nor attempt to obtain clients by inflated or misleading claims, nor by self-laudatory statements, nor by statements that imply the one Practitioner has skills that are superior to those of another Practitioner.
- The Student Practitioner is expected to follow professional business etiquette and practise as taught in their training.
- The Student Practitioner will not sign or issue a certificate, report or similar document that contains false information.

3. RESPONSIBILITY TO SELF

- The Student Practitioner is expected to take responsibility for their own emotional, mental and physical health. The Student Practitioner shall acknowledge that there are limits to the service they can provide, and for their own protection and that of clients, the Student Practitioner shall decide whether they can take on any particular client. Respect for their own health and self esteem shall be maintained.

Committed Partnership: Yes No

Have You Been Married Before: Yes No

Do You Have Children: Yes No

If so, how many: _____ What are their ages: _____

If you have children who live with you, what are your plans for their care during the residential intensive phases of the training?

Who are you currently employed by?

For how long?

Business Contact Address

Business Phone: .Email:

If not currently employed what is your situation?

Please Provide Your Employment History

Educational Experience:

High School Grad: Yes No If No, your age at High school leaving:

College Graduate: Yes No Years in College/University:

College or University Attended:

Degrees Attained:

Other Significant Educational Experience:

Continuing Education:

Trainings

Other:

Licensing/Certification

List currently held licenses and or credentials e.g. (MD., Attorney, PT., OT., CPA., Pilot, Teacher, Nurse, etc):

Since: Since:

Since: Since:

Financial Information: (if you are paying in full you don't have to provide this information but we do recommend that you create a business plan anyway, and we are happy to discuss this as part of your selection interview).

Annual Income Net Worth (Assets less liabilities) i.e. own house, car, cash in bank, investments etc.

Please present your plan for paying for your Practitioner Training and for covering any commitments you have outside the training e.g. mortgage payments, hire purchase, other loans, credit card, etc. whilst in training and for your first few months in private practice. Please present your options should this business plan not work. Please be very detailed and

specific. Attach this as a separate sheet if necessary. The School wants to support students in being clear and creative about the financial considerations around their training. Remember we are available to discuss your plans and options.

Please consider your application thoughtfully – we value an honest open appraisal that accurately reflects your experience. We find it is helpful to discuss (where appropriate) your thoughts and feelings about the questions in the application, with friends and family that know you well, to help you compose an in depth and well rounded application.

1. Why do you want to be a Structural Integration Practitioner?
2. What do you consider your 3 major personal accomplishments in life?
3. As a Structural Integration Practitioner you may be working with people of all ages who have a variety of backgrounds, personal histories, and personal problems. People may experience a wide variety of emotional or physical reactions during sessions including anger, sadness, joy, and physical or emotional discomfort. It is important that practitioners possess the ability, desire and emotional maturity to work intimately with others. Please discuss what life experience and personal traits you have that indicate your ability to handle these types of situations. Include any concerns that you may have in this area. Please Rate your overall readiness in this area on a 1 - 10 scale: _____
4. As a Structural Integration Practitioner you will physically touch and work with people's bodies. Please discuss your feelings about working with people in this manner.
5. As a Structural Integration Practitioner you will use your body in an active way. Describe your body, what lessons you have already learned from your body. Considering the physicality of Structural Integration how do you feel your body will support you in your work as a Practitioner. Please discuss any concerns you may have. Please rate your overall physical readiness on a scale of 1 – 10 _____.
6. What bodywork or movement work have you personally experienced, and what were the results for you?
7. Although there is a growing acceptance for this type of work, Structural Integration Practitioner are still "pioneers" so to speak. This demands initiative, confidence and most of all commitment. Discuss what this means for you at the moment. Please rate your overall readiness in this area on a scale of 1 to 10. _____
8. Undertaking a major career change often requires the support of others in one's life. Discuss how your close family and friends feel about your choice and what support you could expect from them. Please consider this carefully.
9. What are your greatest potential strengths and what might be your weaknesses as a future practitioner? Please note that understanding what one does know is as important as knowing what one doesn't know.
10. Please discuss any concerns and/or questions you have about becoming a Structural Integration Practitioner.
11. Have you read and do you clearly understand all of the provisions of the licensing agreement? Are you in agreement with the principles involved in this contract?
12. Imagine that it is ten years from now. Write a brief outline of what you have accomplished in the last ten years.

Signed: _____ Date: _____
Applicant

For Any further information contact the Training Director Linda McClure on
quantum@onthenet.com.au +61 (7) 55270333 Within Australia (07) 55270333